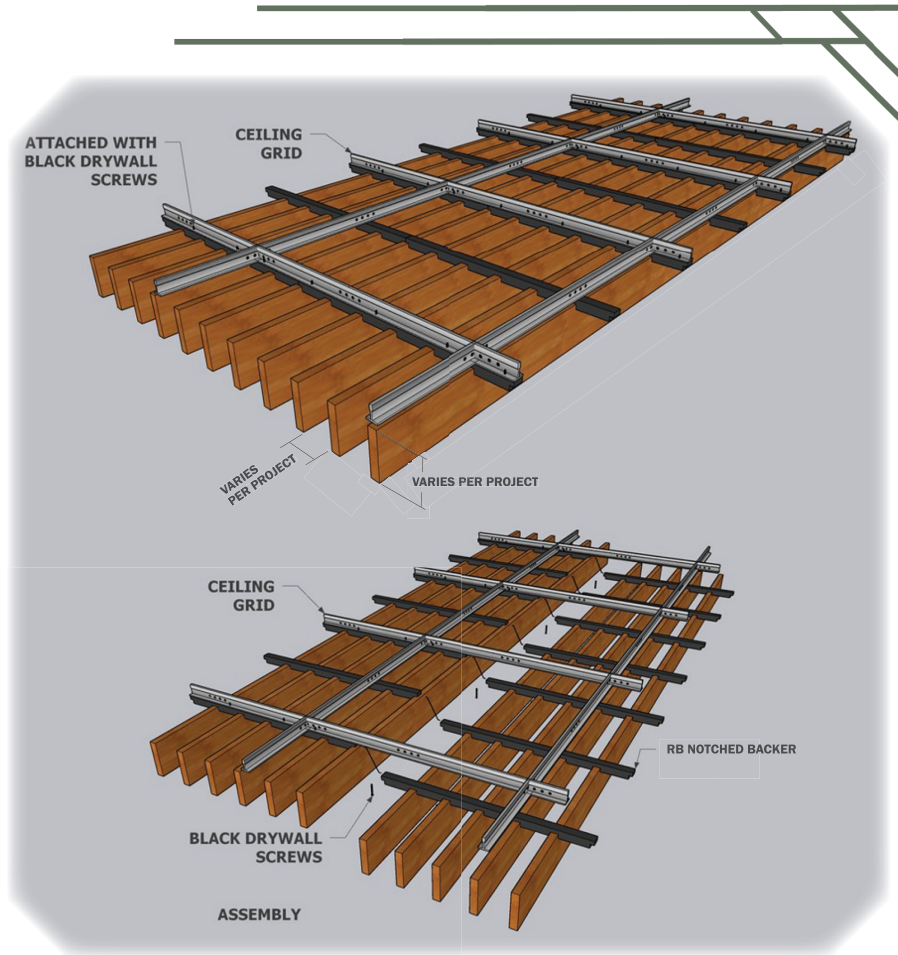




Providing the warm look of wood, plus an acoustical treatment, our RB Baffle Systems are available with solid wood or wood veneer options.



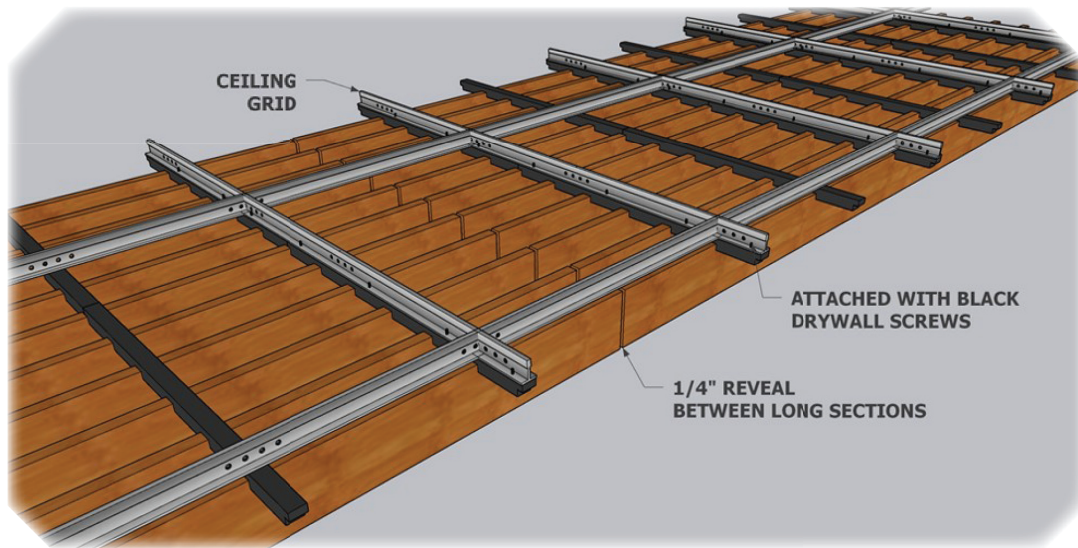
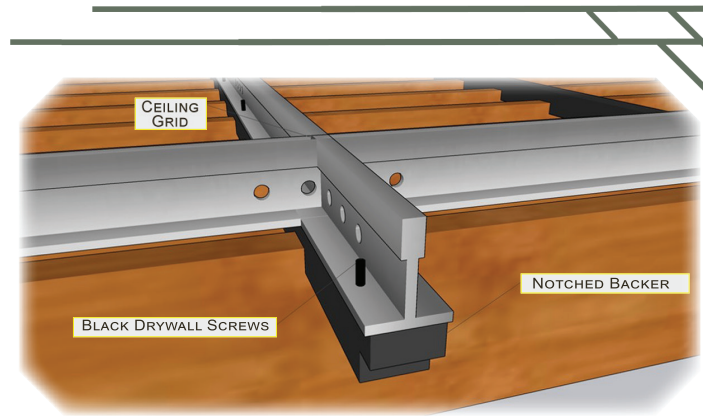
Blade sizes have a minimum depth of 3 1/2". Our panel width is determined by the project specifications. Solid wood panels are available with 3 ft -10 ft lengths, and our veneer panels are offered in 8-12' lengths. (Blades per foot will vary per project specifications.) Soundtex and/or insulation can be added for greater NRC values. (See page 2 for NRC standard values.)



The RB Baffle system blades are easily installed onto the runners with drywall screws and can be attached to walls using sheathing or furring strips.

\*See Grille System for smaller blade depth options.

**RB Baffle System**



#### NRC VALUES

NRC Value (with 1" encapsulated insulation) = 0.90

NRC Value (with 2" encapsulated insulation) = 1.00

#### CUSTOMIZATION

The RB Baffle System can be custom manufactured in a variety of blade sizes, lengths, and widths, in any commercially available solid wood species or veneer color. Color-matching and custom finishes are also available.

#### STORAGE AND ACCLIMATIZATION

All Baffle System material must be stored and installed only in a controlled interior environment (relative humidity range 25% - 55% maximum - temperature between 60° - 80° - not to exceed 86°). All windows, doors and wet work must be complete before installation.

Material should only be installed after reaching equilibrium moisture content.

#### FIRE RATING

The RB Baffle System Panels and components can be treated with Fire Retardant chemicals to achieve Class A fire rating compliance.

#### WARRANTY

All materials produced by Redbud Architectural Systems are guaranteed against manufacturing defects for one year from the date of delivery. \*Due to the nature of wood stains, color matching can not be guaranteed.